



VersiControl™ Bluetooth Touchscreen Guide

How To Control Your
VersiColor™ RGB(W) Lighting



INITIAL SETUP: FINDING DEVICES

A set-up screen for connecting your controllers will open automatically the first time you power up your touchscreen. Multiple screens can be connected to up to four different controllers as well as the ITC app.

The screen will scan for controllers and will populate on the right once located



Tap **Select** to connect

HOME DASHBOARD OVERVIEW

Selecting Zone

Tapping the zone toggle will turn the zone on or off—the zone will be outlined with a white box and toggle will be blue when on

Save Presets

Press and hold number button to save current settings



Quick White

Tap once to turn all unlocked and active zones immediately white, tap again to return all zones back to previous state

Adjust Brightness

Slide to dim or brighten the light output

CHANGING COLOR: BASIC MODE

- 1: Select zone you want to adjust
- 2: Change the colors using the palette
- 3: Move the color selection circle around until the desired color displays inside the box



Adjust White

Slide to adjust the warmth or coolness of the white light

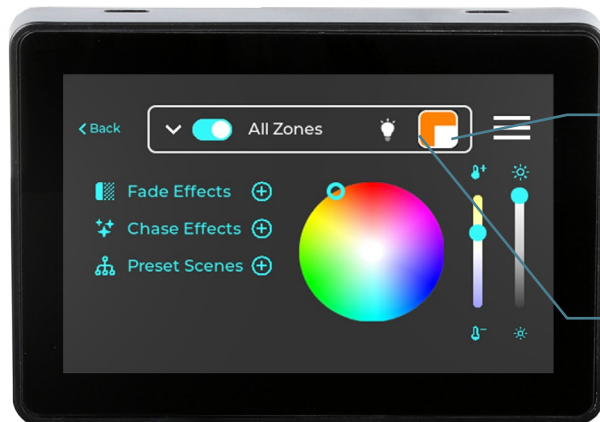
Adjust Brightness

Slide to dim or brighten the light output

CHANGING COLOR: ADVANCED MODE

There are two modes for changing color. The screen is setup for Basic Mode by default, allowing for control over the RGB and white LED chips separately, with only RGB or white active at once.

Advanced Mode allows both RGB and white LED chips to be turned on at the same time for a greater level of customization.



Adjust White

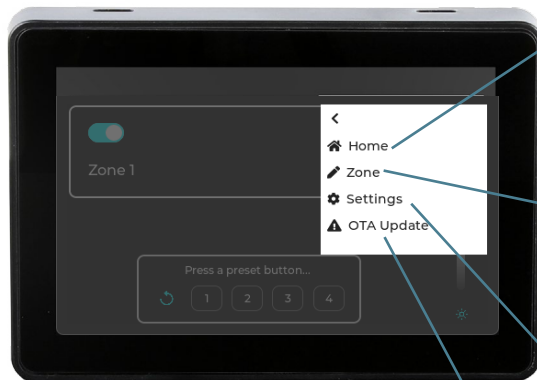
Drag the warmth slider to adjust the white chip—the small square will grow/shrink to show the ratio of white light

Adjust Color

Move the blue circle around the color palette to select the RGB color—the larger box shows the ratio of RGB light

ADDITIONAL FEATURES MENU

Additional features can be found in the top right corner by tapping the three-bar hamburger menu.



Home

Will take you back to the main screen which will show the zone status, preset scenes, and brightness adjustment

Zone

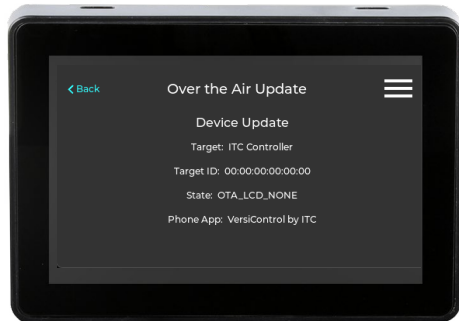
Will take you to the color palette, fade effects, and preset scene setup

Settings

Will take you to the controller details, display customizations, and the help screen

Over-The-Air Updates

Will take you to the screen to check for software updates



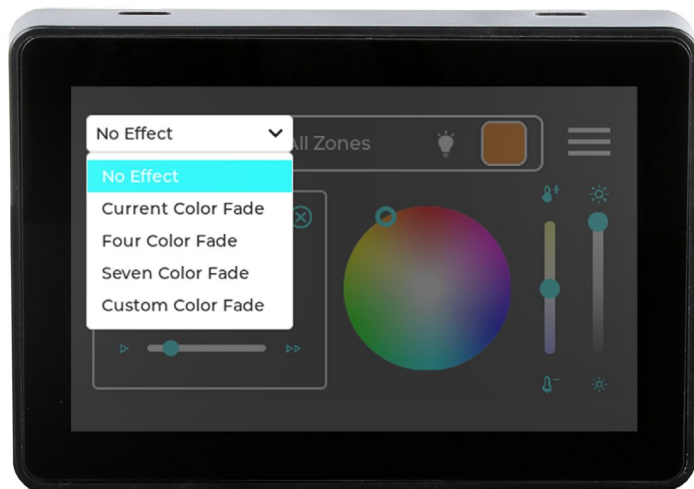
OTA Update Screen

Refer to the software update [step-by-step guide](#).

FADE EFFECTS MODE

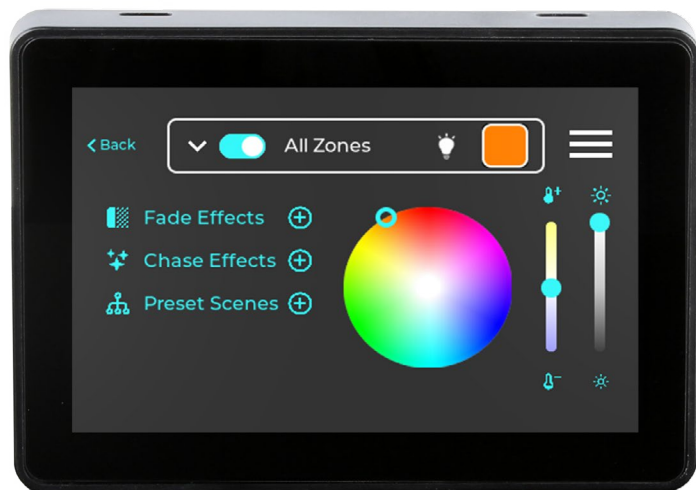


- 1: Select desired zone or all zones
- 2: Tap the three-bar hamburger menu in the top right corner and select **Zone** from the drop down menu



- 3: Select a standard effect or choose **Custom Color Fade** to create your own
- 2: Choose the speed of the effect
- 3: The effect will be enabled on selected zone(s)—tap the **X** to close out of the effect menu

PRESET SCENE MODE

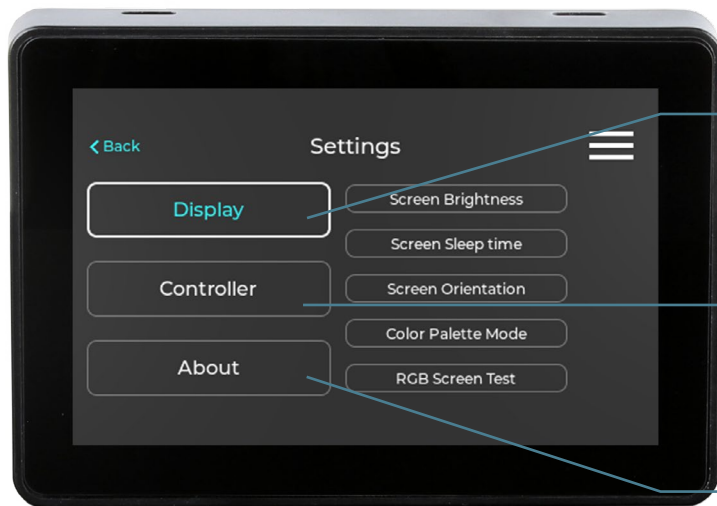


- 1: Select desired zone or all zones
- 2: Tap the three-bar hamburger menu in the top right corner and select **Zone** from the drop down menu
- 3: Set the lighting selections in your desired zones



- 4: Select the **Preset Scenes** menu
- 5: Press and hold one of the numbers to save the current lighting setting
- 6: The effect will be enabled on selected zone(s)—tap the **X** to close out of the effect menu

SETTINGS MENU



Display

Adjust the screen brightness, sleep time, orientation, and color palette mode

Controller

Displays controller name and Bluetooth status. Zone names can be changed from this menu

About

QR link to external website for more help and troubleshooting tips

DISPLAY MENU



Screen Brightness

Use the slider bar to increase or decrease screen brightness



Screen Sleep Time

Select between 15 and 60 seconds for screen timeout and choose whether the screen goes to sleep or simply dims



Screen Orientation

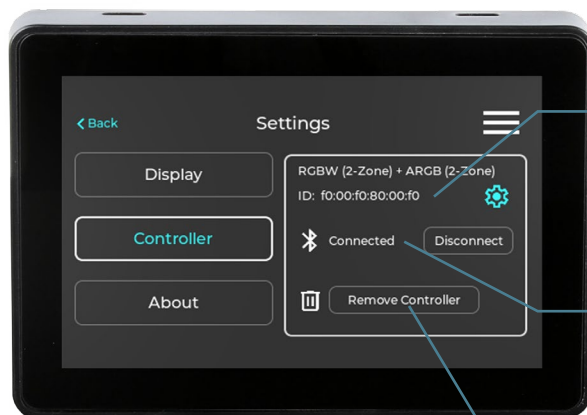
Select landscape or portrait orientation



Color Palette Mode

Select between basic (default) and advanced color control. See color control on page 5 for more details

CONTROLLER MENU



Controller Name & ID

Each controller will have a unique ID number

Bluetooth Status

The screen should always say **connected**. If the lights are not responding to adjustments, check to make sure the Bluetooth signal hasn't been lost



Remove Controller

If you are experiencing issues with controlling the lights, tap **remove controller** and then reconnect it to the screen

Zone Names

The zone names can be customized so they are more easily identifiable in your unit

ABOUT MENU



About Menu

Use the QR code to reach out to ITC with questions about the function of the screen