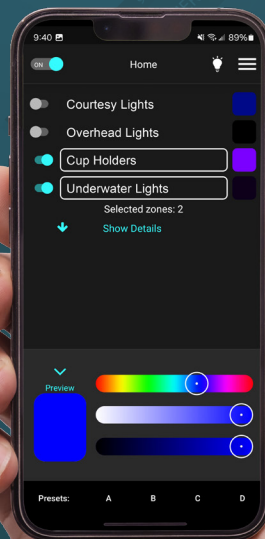




VersiControl™ Guide

How To Control Your
VersiColor™ RGB(W) Lighting



CONTENTS

01

RESOURCES

Page 3

02

VERSICONTROL APP USER INSTRUCTIONS

Pages 4 - 13

03

OVER THE AIR UPDATE SETUP INSTRUCTIONS

Pages 14 - 15

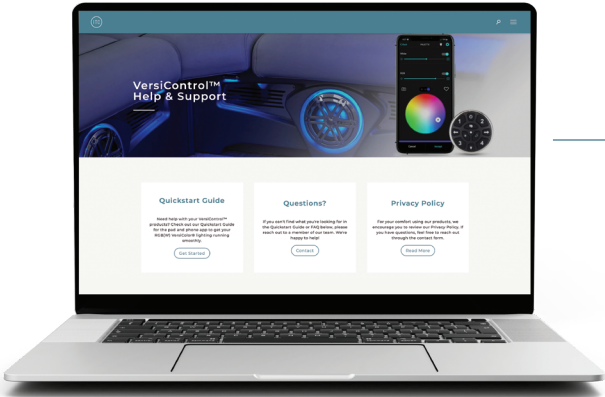
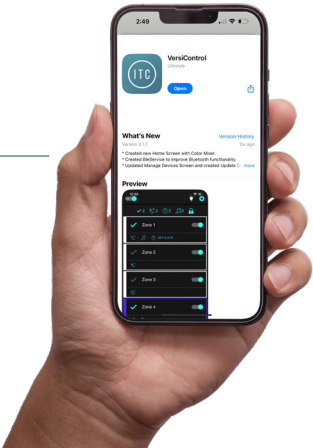
04

VERSICONTROL PAD USER INSTRUCTIONS

Pages 16 - 21

RESOURCES

DOWNLOAD THE APP



ONLINE SUPPORT

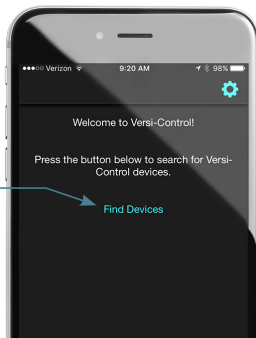
Access FAQs, Contact Form, and more



INITIAL SETUP - FINDING DEVICES

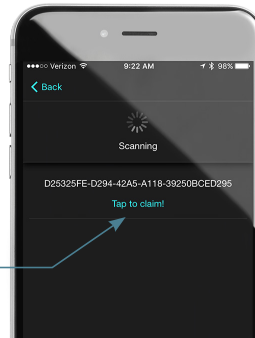
Upon starting the VersiControl App for the first time, you will encounter a series of set-up screens to find and connect to your control devices.

Tap **Find Devices** to initialize search



The app will begin scanning for on board devices and display the available devices once located

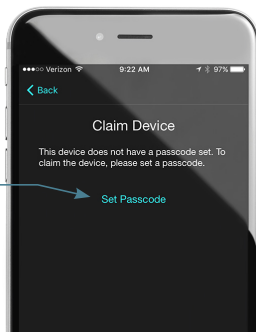
Select **Tap to claim!** to connect app to the device



During initial set-up, you'll be asked to set a passcode to claim the device

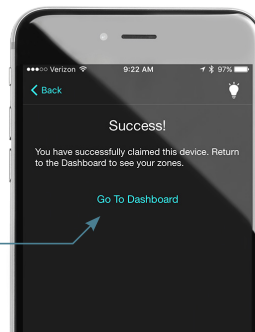
Tap **Set Passcode** to set up a passcode

NOTE: Be sure to store the passcode in a secure place for future reference



Once you've successfully set a passcode you'll receive a 'Success!' notification

Tap **Go to Dashboard** to leave the initial set-up screen and move to the app dashboard



ZONE DASHBOARD OVERVIEW

Quick White

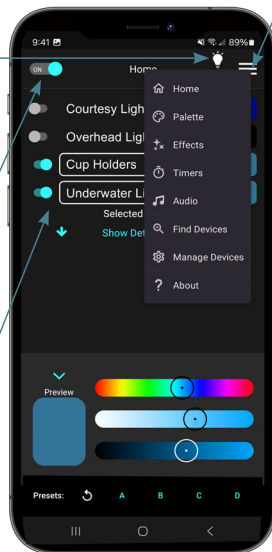
Press once to turn all unlocked and active zones immediately white, press again to return all zones back to previous state

Main Power

Turns system on/off: when powered back on system returns to previous state

Zone Control Bars

Controls each individual zone including: color, power, zone lock, timer, effects, and audio-beats mode



Drop Down Menu:

Home

Returns to Dashboard

Palette

Controls the color selection for each zone in color palette mode

Effects

Controls the selection of preset special color effects and allows for custom effects setup

Timers

Allows lights to be powered on and off via a set timer

Audio

Allows light brightness to react to the beat of the music

Find Devices

Scan to find nearby controllers

Manage Devices

Change passcodes, remove devices, check for updates

About

App details and access to VersiControl site for frequently asked questions

MANAGE DEVICES



Settings

Set the passcode, perform a factory reset, or remove the device

Controller Information

Identify the unique ID and controller type

Local Name

Customize the name of your controller for easy identification

Bluetooth Connection

Connect or disconnect Bluetooth

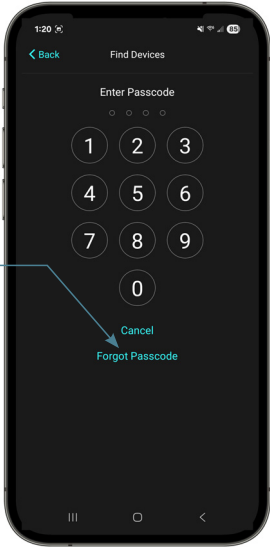
Check for Updates

Check for latest software updates

RESET OR FORGOT PASSCODE

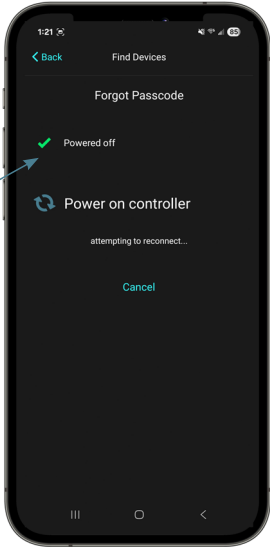
Forgot Passcode

Tap to reset the controller



Forgot Passcode Menu

Remove power from the controller to reset the passcode. Once you see the green check mark, you can re-power the controller and proceed with resetting the passcode when prompted



CONTROLLING ZONES

Selecting Zone

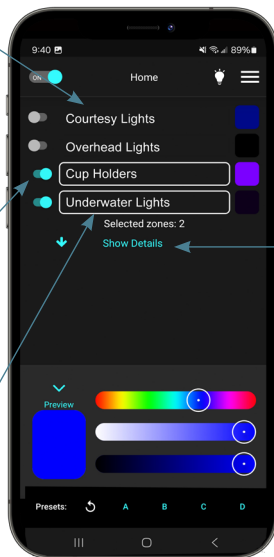
Tapping the zone name will select or deselect the zone to enable a color or mode change on selected zones—the zone will be outlined with a white box when selected

Turn On/Off Individual Zone Power

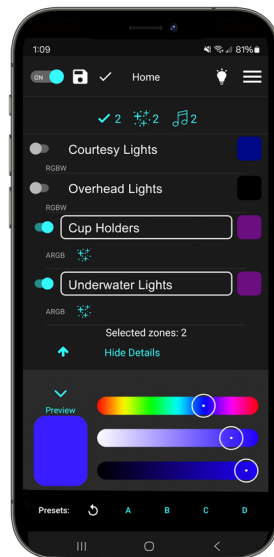
Tap the specific zone's power slider to turn on or off power to the individual zones

Assign and Change Zone Name

Press and hold the zone name to customize or update



To see all effects applied to the zones, tap **Show Details**



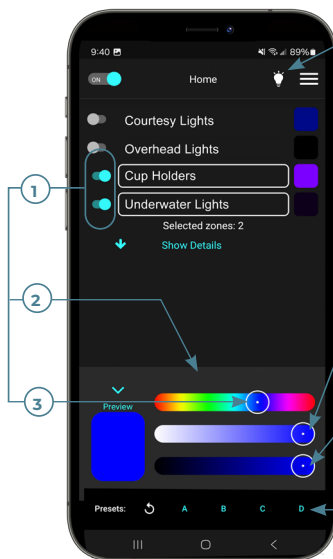
Zone Detail Screen

CHANGING COLOR

1: Select all desired zones

2: Change the colors with the sliders at the bottom or via the palette mode under the drop down menu above

3: Move the color selection circle around until the desired color displays inside the circle



Quick White

Press once to turn all unlocked and active zones immediately white, press again to return all zones back to previous state

White Brightness Adjustment

Slide to adjust and dim the brightness level of the white light output

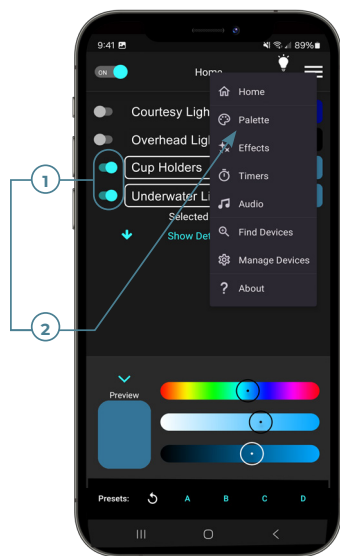
RGB Brightness Adjustment

Slide to adjust and dim the brightness level of the light output

Save Presets

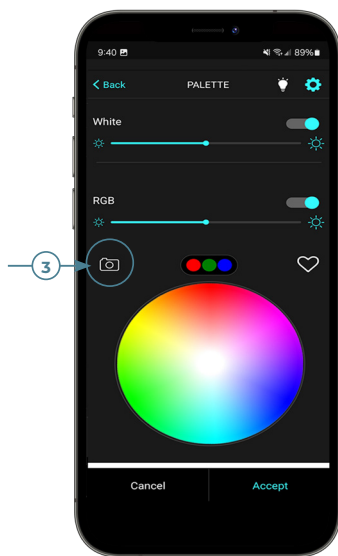
Long press to save current zone settings

SELECTING COLOR WITH CAMERA FEATURE

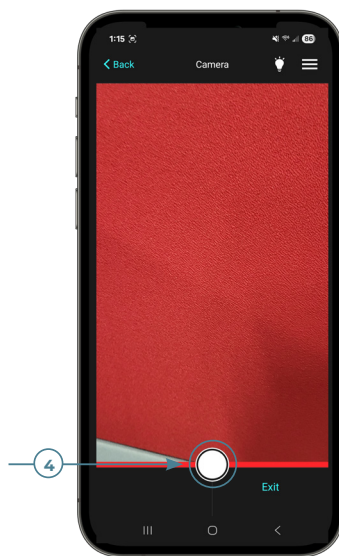


1: Select all desired zones

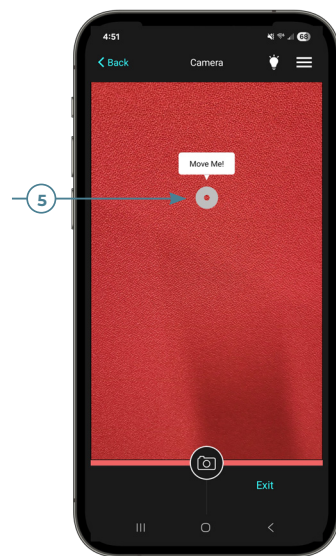
2: Tap **Palette** from the drop down menu to move to the palette color-change screen



3: From the Palette screen, tap the camera symbol to use your phone's built-in camera to capture an image of a color to match to your lights

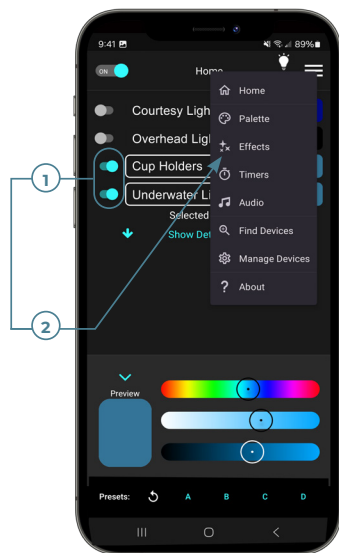


4: On the image capture screen, zoom in on your desired color and press the capture button to take the picture



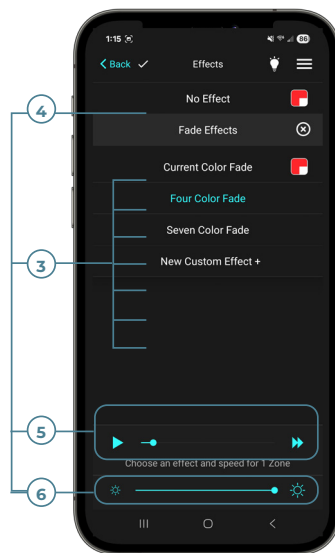
5: Slide the color selection circle around the image to choose the perfect color

SPECIAL EFFECTS MODE



1: Select all desired zones

2: Tap **Effects** from the drop down menu to move to the effects mode screen to add an effect to all actively selected zones



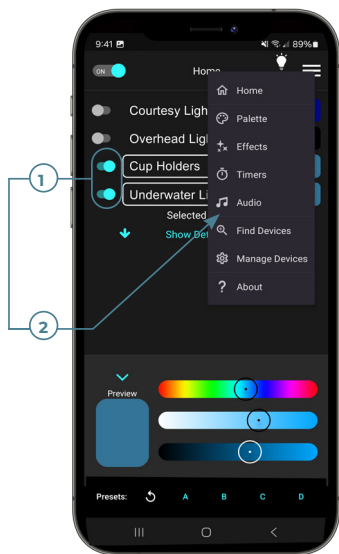
3: Select a preset effect or

4: Choose **New Custom Effect** to create your own and assign a name to your custom effect

5: Choose the speed of the effect

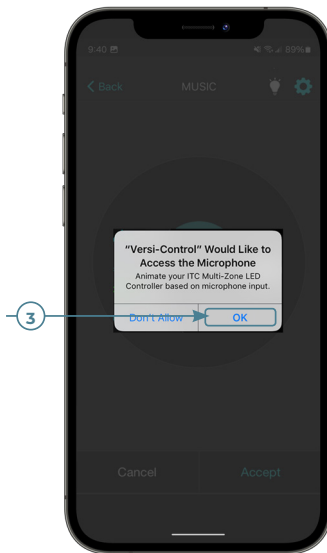
6: Choose the brightness of the effect

AUDIO/MUSIC-BEATS CONTROLS



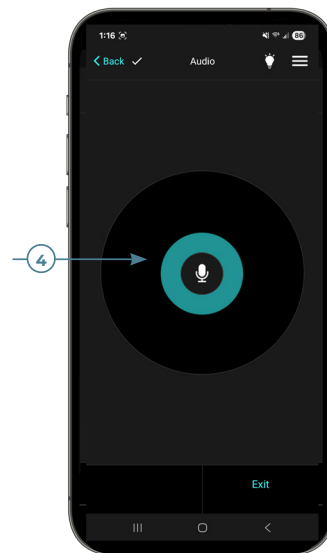
1: Select all desired zones

2: Tap **Audio** from the drop down menu to move to the audio mode screen to add an effect to all actively selected zones



Upon selecting Audio mode for the first time, you'll have to grant permission to access your phone's microphone

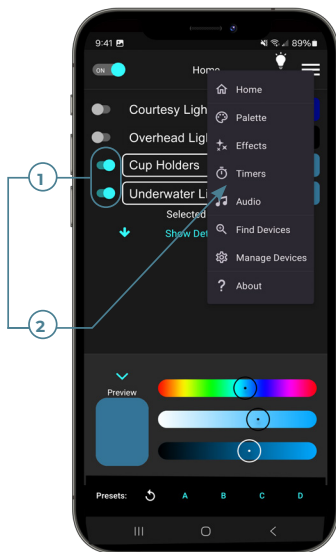
3: Tap **OK** to allow access to microphone input



4: Once music is playing, the audio indicator circle will react to the beat of the music

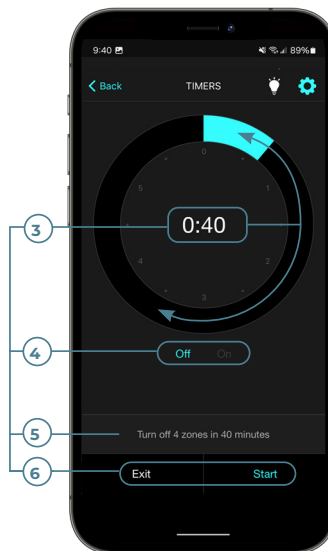
CONTROLLING ON/OFF TIMER

Note: Once activated, the timer will remain active without the presence of phone until time expires.



1: Select all desired zones

2: Tap **Timers** from the drop down menu to move to the timers mode screen to set a power-on or power-off timer on the actively selected zones



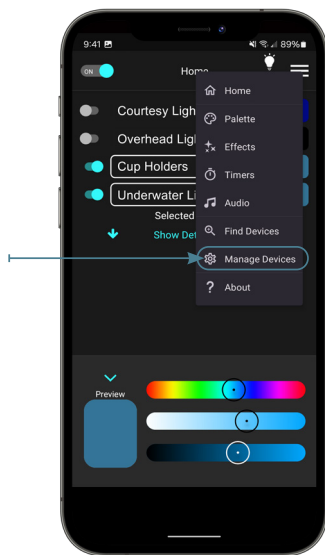
3: Rotate the clock slider to the desired time

4: Choose to power on or off

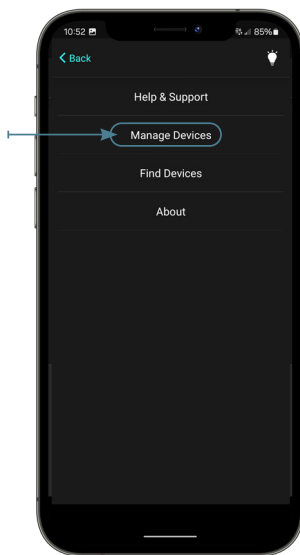
5: Confirm your selection

6: Tap **Start** to enable the timer on each of the selected zones

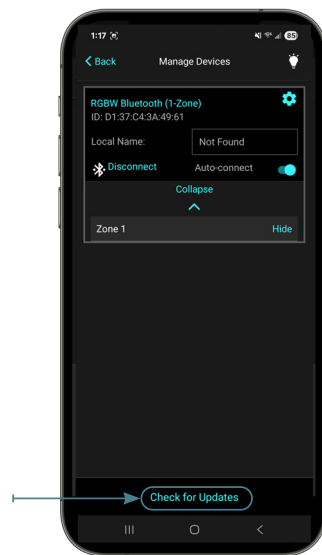
OVER-THE-AIR UPDATES SETUP



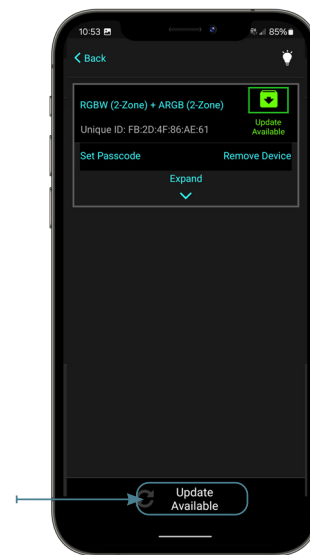
1: Open the ITC VersiControl app and tap **Manage Devices** from the drop down menu



2: Select **Manage Devices**



3: Tap **Check for Updates**

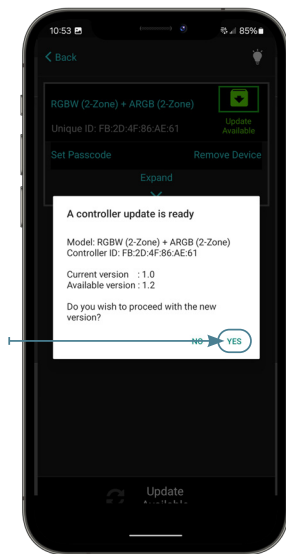


4: Tap **Update Available**

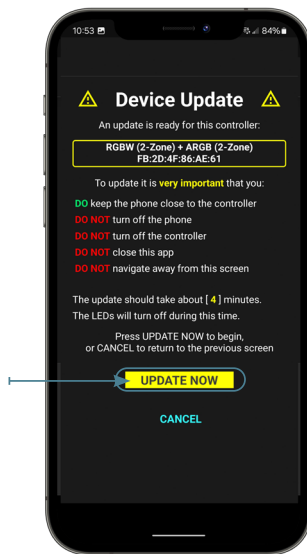
Continued on page 13

OVER-THE-AIR UPDATES SETUP

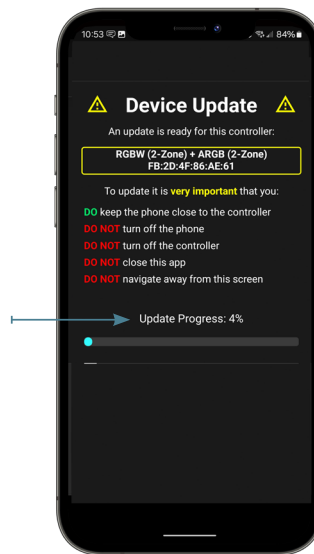
(Continued)



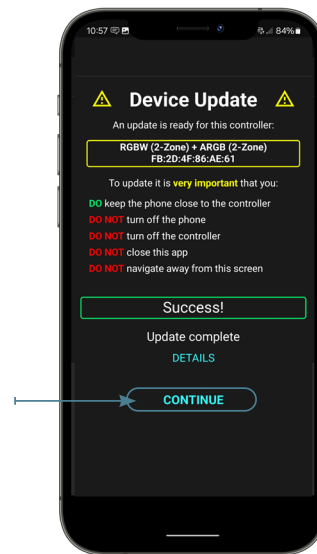
5: Tap **Yes**



6: Select **Update Now**



7: The app will show the update progress



8: Select **Continue** once the update is complete

PAD CONTROLLER OVERVIEW

Note: Pad Controller **does not** work with the RV-C or NMEA smart system.

Color Indicator

- If adjusting colors, this will indicate the current color selected
- If Quick White button is pressed LED will turn white and flash

Main Power

Turns system on/off and saves the current light settings

Color Select Mode

Enables RGB color changes within currently selected zone

Zone Select Buttons

Enables selection of zones 1- 4 to initiate a color or mode change within that zone

Brightness Adjust Mode

Enables the ability to adjust the brightness of light output or the brightness of the pad itself

Left & Right Buttons

[Functionality depends on current mode]

- **Color Mode:** Cycle through RGB Colors
- **Dim Mode:** Increase or decrease brightness of light
- **Fade Mode:** Increase or decrease fade speed

Effects Mode

Enables 7- color fade within the active zones

Quick White Button

- One press turns all unlocked and active zones white
- Press again to return to previous state



POWER/QUICK WHITE/ARROWS FUNCTION

Main Power

- Once the power button is pressed, the pad's back light LEDs located behind the arrow keys, the power button, and the Quick White button will illuminate
- All zones' LEDs will illuminate based on their last state when powered off
- Powering down the switch will save the current light setting—the next power on will return system lights to its previous state



Quick White Button

- The first press of Quick White will turn all unlocked and active zones to white
- The center color indicator will turn white and blink, indicating Quick White mode is active
- When in Quick White mode, you will be unable to change any color, mode, or brightness until Quick White is deactivated
- Press the Quick White button again to deactivate Quick White and return to the previous state

Arrow Key Operation

- The two arrow keys operate as follows within a mode:
 - ← decreases mode function
 - increases mode function

Color Mode: Arrows will cycle through RGB colors

Brightness Mode: Arrows will increase/decrease the brightness of light output

Effects Mode: Arrows will increase/decrease the speed of the 7-color fade

Passcode Reset: Press and hold both arrow keys together to reset the passcode—this function will also unlock any zone that was previously locked out by the phone app or controller

ZONE BUTTON CONTROLS

The zone buttons labeled 1 - 4 control the states of an individual zone. The LED behind each zone button indicates which state the zone is currently operating in: Off State, On State, and Adjust State.

- **OFF STATE**

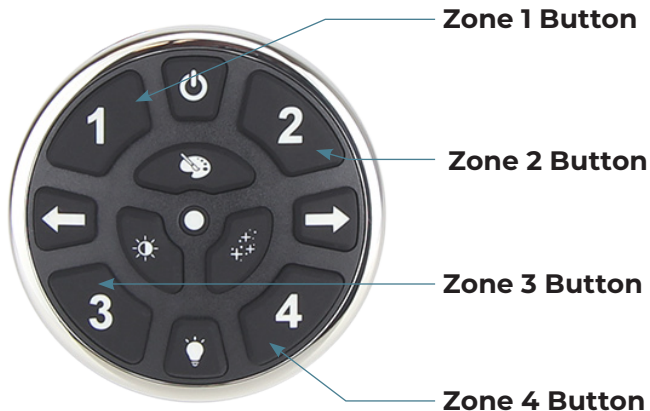
Indicator LED behind the zone number is off and zone is off—All lights connected to that zone are powered off

- **ON STATE**

Indicator LED behind the zone number is on and solid. The zone is powered on and the lights are turned on in the selected zone

- **ADJUST STATE**

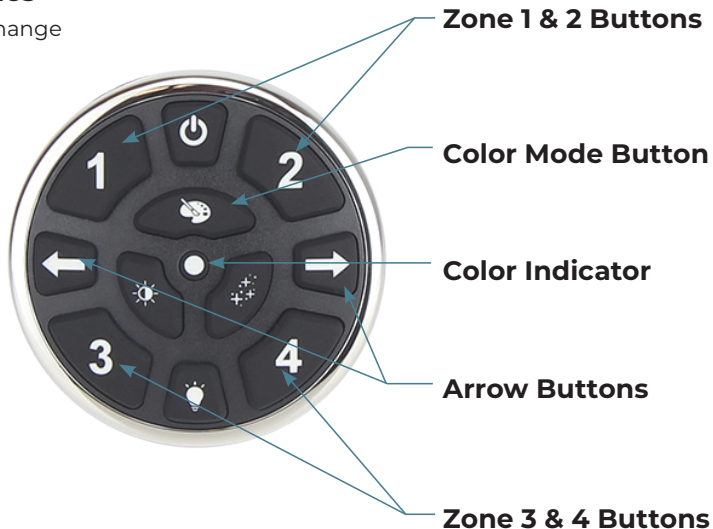
Indicator LED behind the zone number is blinking and the zone is in adjust mode—Selecting one of the 3 mode buttons (Color, Effects, Brightness) will place the zone into that mode (There is a 30 second timeout if no adjustments are made)



CHANGING COLOR

Changing Color in Selected Zones

1. Press the zones in which you plan to change the LED color—the LED behind each zone will blink indicating that zone is in adjust mode
2. Press the Color Mode button to put the keypad in color adjust mode
3. Press the $\leftarrow \rightarrow$ buttons to cycle through the available RGB color options—there are 21 possible color selections using the controller pad
4. The center color indicator will change to display the selected color
5. Once a desired LED color has been determined, press each of the zone buttons that are currently in adjust mode again to end adjust mode

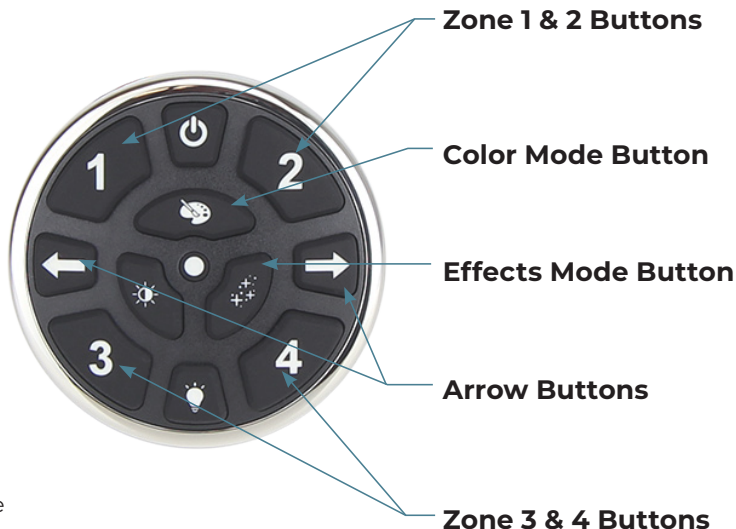


EFFECTS MODE CONTROLS

Note: The center color indicator will not change color.

Controlling Zone Effects

1. Press the zones in which you plan to enable the LED color change fade effect—the LED behind each zone will blink indicating that zone is in adjust mode
2. Press the Effects Mode button to put the keypad in effects adjustment mode
3. Press the ← → buttons to decrease or increase the speed of the 7-color fade effect
4. The 7-color fade includes: yellow, white, cyan, blue, red, purple, and green
5. Once a desired LED fade speed has been determined, press each of the zone buttons that are currently in adjust mode again to end adjust mode



BRIGHTNESS CONTROLS

Note: To adjust the brightness of the pad itself, press the brightness adjust mode button (without any zones selected) and use the arrows to adjust the pad's brightness as desired.

Controlling Light Brightness

1. Press the zones in which you plan to adjust the LED light brightness—the LED behind each zone will blink indicating that zone is in adjust mode
2. Press the Brightness Mode button to put the keypad in brightness adjust mode
3. Press the $\leftarrow \rightarrow$ buttons to decrease or increase the brightness of the light output
4. Once a desired LED brightness has been determined, press each of the zone buttons that are currently in adjust mode again to end adjust mode

