



VersiControl™ Quickstart Guide

How To Control Your
VersiColor™ RGB(W) Lighting



INITIAL SETUP - FINDING DEVICES

Upon starting the VersiControl App for the first time, you will encounter a series of set-up screens to find and connect to your control devices.

Tap 'Find Devices' to initialize search



The app will begin scanning for on board devices and display the available devices once located



Select 'Tap to claim!' to connect app to the device

During initial set-up, you'll be asked to set a passcode to claim the device

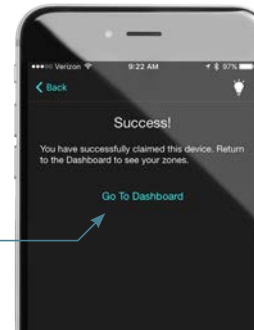
Tap 'Set Passcode' to set up a passcode

NOTE: Be sure to store the passcode in a secure place for future reference



Once you've successfully set a passcode you'll receive a 'Success!' notification

Tap 'Go to Dashboard' to leave the initial set-up screen and move to the app dashboard



ZONE DASHBOARD OVERVIEW

Main Power

Turns system on/off. When powered back on system returns to previous state.

All Zones Status Indicator

Indicates current status of all zones.



= No. of zones selected
[Example = 4 zones selected]



= No. of zones in effects mode
[Example = 4 zones in effects mode]



= No. of zones in timer mode
[Example = 4 zones in timer mode]



= No. of zones in locked mode
[Example = no zones in locked mode]

Zone Control Bars

Controls each individual zone including: color, power, zone lock, timer, effects, and music-beats mode.

Color Selection Mode

Controls the color selection for each zone, including camera more and custom color.

Quick White

Press once to turn all unlocked and active zones immediately white, press again to return all zones back to previous state.

Settings

Accesses system settings including: Help, Manage and Find Devices, About the app, and external web resources.

Timer Mode

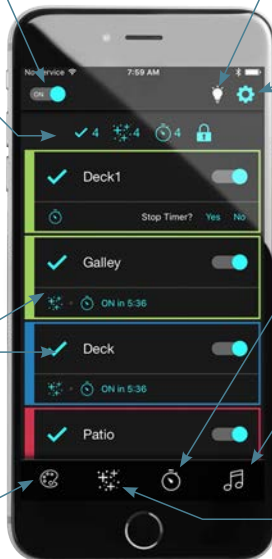
Allows lights to be powered on and off via a set timer.

Music-Beats Mode

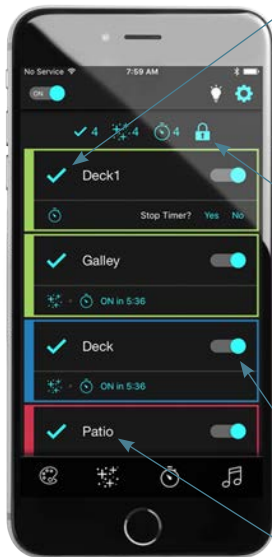
Allows light brightness to react to the beat of the music.

Special Effects Mode

Controls the selection of preset special color effects and allows for custom effects setup.



CONTROLLING ZONES



Selecting Zone

Tapping the ✓ next to the zone name will select or deselect the zone to enable a color or mode change on selected zones. The ✓ will illuminate when the zone is selected and darken when the zone is deselected.

[The example shows 4 zones selected.]

Locking Zones

Tap the 🔒 symbol to move to the Edit Locks screen. On the Edit Locks screen tap the 🔒 symbol to change from unlocked to locked on all desired zones.

All locked zones will be excluded from any color or mode changes until it is placed back in unlocked mode.

[🔒 = Locked 🔓 = Unlocked]

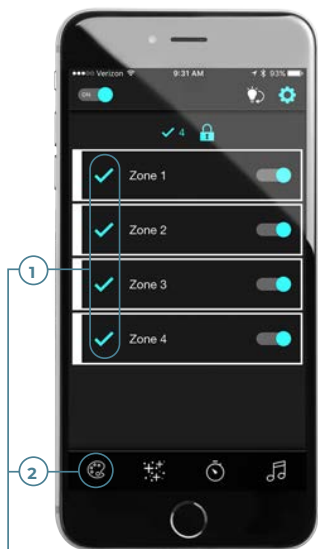
Turn On/Off Individual Zone Power


Tap the specific zone's power slider to turn on or off power to the individual zones.

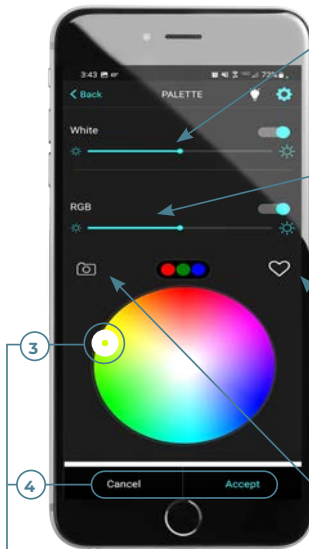
Assign and Change Zone Name

Press and hold the zone name to customize or update the zone name.

CHANGING COLOR



1: With all desired zones selected, **2:** Tap the  symbol to move to the color palette screen to change light color to all the actively selected zones.




White Brightness Adjustment

Slide to adjust and dim the brightness level of the white light output.

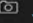
RGB Brightness Adjustment

Slide to adjust and dim the brightness level of the light output.

Save Favorite Colors

Tap the  symbol to open the favorites pallet, then tap the '+' symbol to save as a favorite for quick future use.

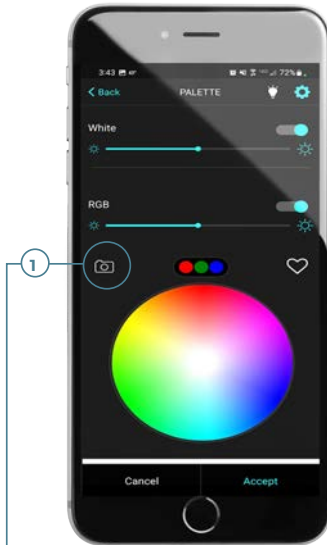
Camera Color Change


Tap the  symbol to move into camera color capture mode to select your lights' color using your phone's built-in camera.

[More on this feature on the next page]

3: Move the color selection circle around until the desired color displays inside the circle. **4:** Tap 'Accept' to change the color, or 'Cancel' to abort and return to zone dashboard.

SELECTING COLOR WITH CAMERA FEATURE

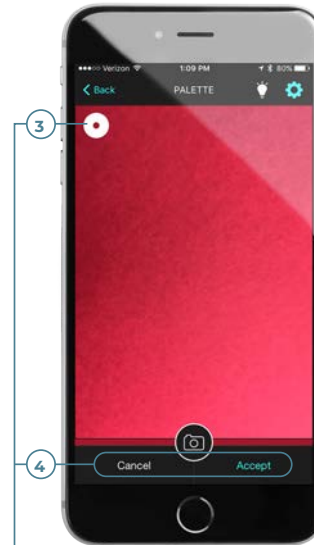


1: From the Palette screen, tap the  symbol to use your phone's built-in camera to capture an image of a color to match to your lights.



2: On the image capture screen, zoom in on your desired color and press the capture button to take the picture.

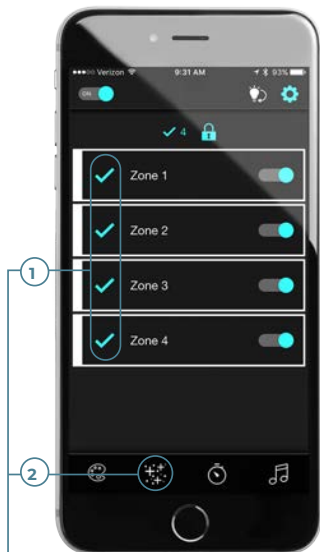
Tap cancel to abort and return to the palette screen.




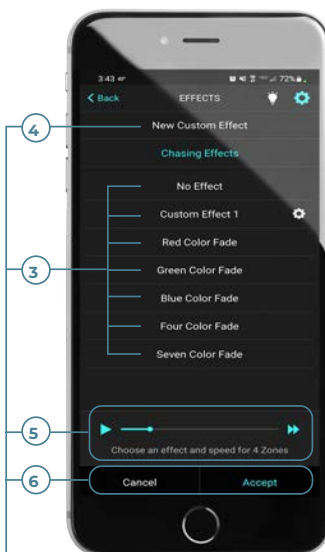
3: Slide the color selection circle around the image to choose the perfect color and **4:** tap 'Accept' to change the light color of all the selected zones.

Tap cancel to abort and return to the palette screen.

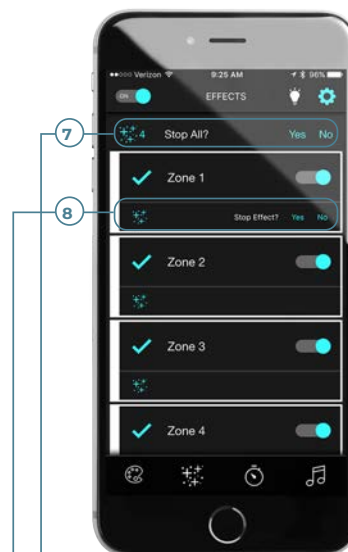
SPECIAL EFFECTS MODE



1: With all desired zones selected, **2:** tap the  symbol to move to the effects mode screen to add an effect to all the actively selected zones.

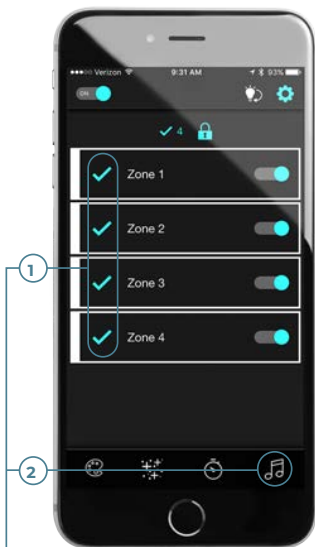


3: Select a preset effect or choose **4:** 'New Custom Effect' to create your own and assign a name to your custom effect. **5:** Choose the speed of the effect, then **6:** tap 'Accept' to enable the effect on all actively selected zone.

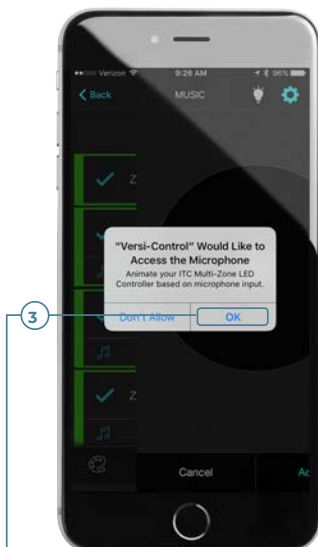


7: To stop all effects, tap the effects indicator in the status bar. Tap yes to stop all effects.
8: To stop effects individually, tap the effects indicator on the zone and tap yes to stop effect.

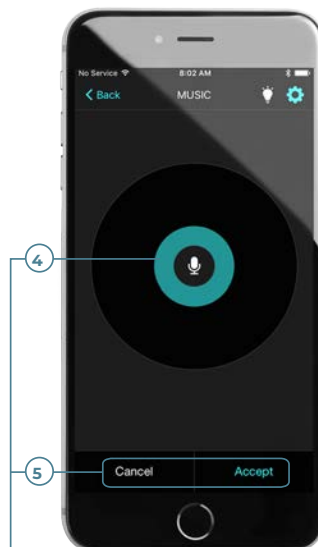
MUSIC-BEATS CONTROLS



1: With all desired zones selected, **2:** tap the 🎵 symbol to move to the music beats mode screen to enable your lights to react to the beat of the music.



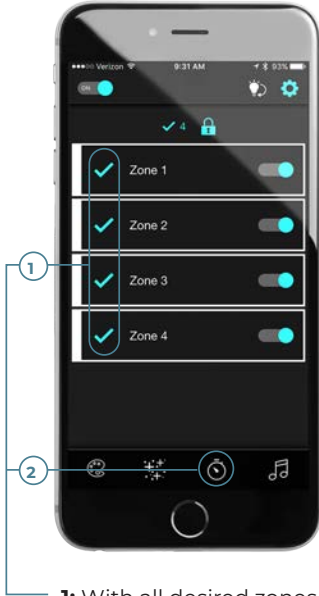
Upon selecting music beats mode for the first time, you'll have to give permission to access your phone's microphone. **3:** Tap 'OK' to allow access to microphone input.



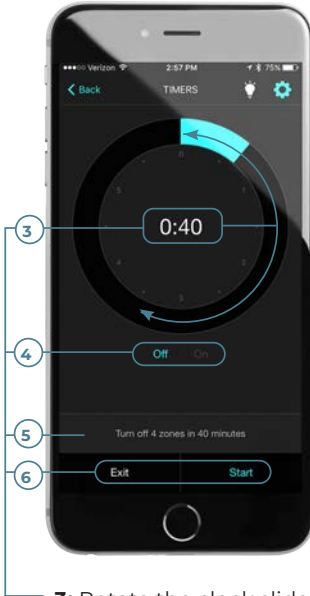
4: Once music is playing, the beat indicator circle will react to the beat of the music. **5:** Tap 'Accept' to enable the beat mode or cancel to abort.

CONTROLLING ON/OFF TIMER

Note: Once activated, the timer will remain active without the presence of phone until time expires.



1: With all desired zones selected, **2:** tap the ⏸ symbol to move to the timer mode screen to set a Power On or Power Off Timer on your actively selected zones.



3: Rotate the clock slider to the desired time, **4:** choose to power on or off, **5:** confirm your selection, **6:** then choose start to enable the timer on each of the selected zones.



Once enabled, the timer countdown will display on each zone. **7:** All timers can be stopped together by tapping the timer symbol on the zone status bar. **8:** Each individual zone timer can be stopped by tapping the zone specific timer.