

MOD™ Leg Floor Base

Part#: DAL-FF-1A-LL-HH-XX

INSTALLATION INSTRUCTIONS

PARTS/TOOLS NEEDED:

				
Table Base	Floor Base	Horizontal and Vertical Leg	#12 Oval Head Screws (Not Provided)	Power Drill (Not Provided)

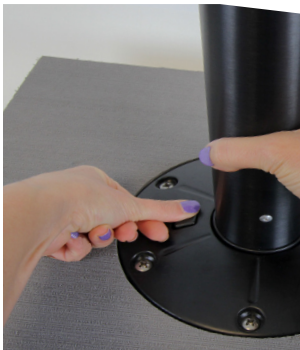
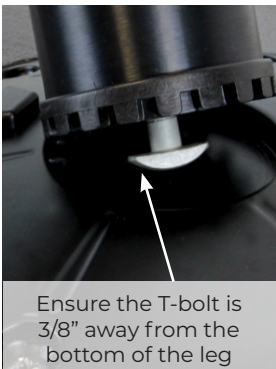
INSTALLATION CONSIDERATIONS

- To avoid a hazard to children, account for all parts and destroy all packing materials.
- Do not sit on or lean on table, intended for use as a table only.
- The stiffness and rigidity of the floor mounting substrate has a direct effect on the sturdiness of the entire table system.

- 1.** Mount the floor base into solid floor structure (such as wood) using #12 Phillips oval head screws.



- 2.** Align the T-bolt on the bottom of the leg with the rectangular opening in the floor base. Insert the T-bolt, press and hold the button and begin to turn. After one turn, pull up on the leg to ensure that the T-bolt is secure in the floor base. Continue to turn the leg until the leg is secure.



- 3.** Place the horizontal leg on the top of the vertical leg use the handle on the side to tighten and secure the horizontal leg.



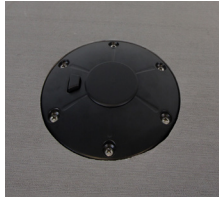
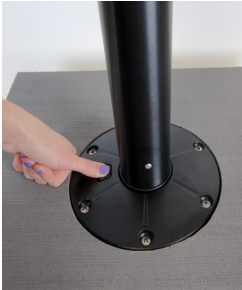
- 4.** Attach the table base to the table (customer provided) using the screws (not provided) appropriate for the substrate. Place the table on the top of the horizontal leg and repeat the tightening process with the handle.



Removing The Leg

To remove the leg, press the button, then turn the leg counter-clockwise and lift gently until the leg removes from the base

Place cover on floor base when the leg is not in place.



3030 Corporate Grove Dr.
Hudsonville, MI 49426
Phone: 616.396.1355
itc-us.com