

Wander™

Horizontal Bend

Diffused Flex Light



Features

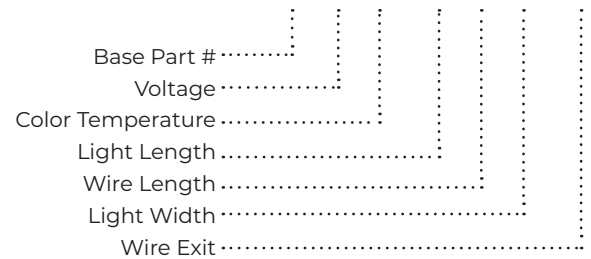
- Bottom wire exit provides a clean, seamless installation with no visible wires
- Electronics design ensures even light output from beginning of the strip to the end with minimal drop in output
- The horizontal bend radius allows for installation around curved ceilings and signage
- RGB(W) chips provide an endless amount of color combinations
- IP66 rated for installation in exterior or wet locations

Product Details

Housing Material	Diffused Silicone
Voltage	24V DC
Wattage	Single Color: 3.6W/Ft RGB: 3W/Ft
Current	Single Color: 0.15A/Ft RGB: 0.13A/Ft
Lumens	145LM/Ft @ 4000K 47LM/Ft @ RGB
Color Temp.	2700K, 3000K, 3500K, 4000K, Blue, Red, Green, Amber or RGB
IP Rating	IP66
UV Stable	Yes
Wire Gauge	Single Color: 18 AWG RGB: 20AWG

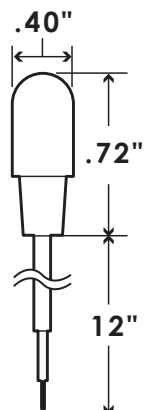
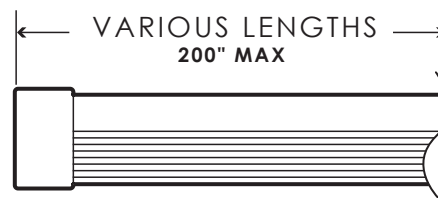
Specification Guide

Sample Part #: HMTL2415-20012-10-BW



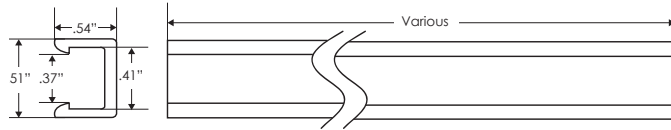
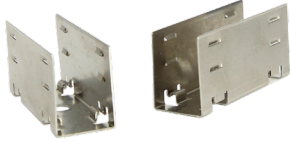
Base Part #	Voltage	Color Temp.	Light Length	Wire Length	Light Width	Wire Exit
HMTL	24 - 24V	27 - 2700K 30 - 3000K 35 - 3500K 40 - 4000K BL - Blue RD - Red GR - Green AM - Amber 15 - RGB	200 - 200"	12 - 12"	10 - 10mm	BW - Bottom Wire Exit

Note: Light cannot be field cut, contact sales for information on custom lengths



Mounting Specification

Mounting Clips/Channel	Part #
Mounting Clip - Qty 1 (recommend one clip every 12")	150-00251
Mounting Clip Kit - Qty 12	800-00218
72" Plastic Extruded Channel Screw Mount White	HMTL10-72-WH
72" Plastic Extruded Channel Screw Mount Black	HMTL10-72-BK



Power Supply Specification

* For more information on power supplies, please review the power supply literature sheet.
 * All power supplies are hardwire, please contact your sales representative for plug-in options available.
 * Note, power supplies over 100W are listed, but are not class 2. The UL listing for the tape light is based on using a class 2 power supply.
 +Only use Magnitude approved dimmers, a 50% load is required if not being used with a dimmer.

Part #	690010.035	270-00267	690010.063	690010.097
Power Supply Type	Electronic	Electronic	Electronic	Electronic
Wattage	60W	100W	320W	600W
Housing	Aluminum	Aluminum	Aluminum	Aluminum
AC Input	100 - 277V AC	120 - 277V AC	115 - 277V AC	115 - 277V AC
DC Output	24V DC, 2.5A	24V DC, 4.1A	24V DC, 13.3 Amps	24V DC, 24A
Input Current	0.6A @120V AC	0.93A @120V AC	0.75A @277V AC	7A @115V AC
Class 2	Yes	Yes	No	No



Part #	690010.130	690010.129	690010.096+
Power Supply Type	Magnetic (MLV) Line Voltage Dimming	Magnetic (MLV) Line Voltage Dimming	Magnetic (MLV) Line Voltage Dimming
Wattage	60W	96W	300W
Housing	Aluminum	Aluminum	Aluminum
AC Input	120V AC	120V AC	120V AC
DC Output	24V DC	24V DC	24V DC, 4.3 Amps
Input Current	0.61 Amps @ 120V AC	1 Amp @120V AC	2.86 Amps @ 120V AC
Class 2	Yes	Yes	No



Controller Specification

WiFi Lighting Control System Controller | Part #: WiFi-104

Communication	2.4GHz Wi-Fi, 802, 11b/g/n Protocol
Input Voltage	12 - 24V DC
Max Current Load	4A x 4CH Max 16A
Max Output Power	192W @ 12V DC 384W @ 24V DC
WiFi Control Distance	320 Feet
Working Temp.	-20°C - 50°C
Dimensions	5"L x 2.9"W x 1.8"H



Constant Voltage Zone Receiver | Part #: R4-5A CV

Wireless Frequency	2.4GHz
Input Voltage	5 - 24V DC
Max Current Load	5A x 4CH Max 20A
Max Output Power	240W @ 12V DC 480W @ 24V DC
Remote Distance	160 Feet
Working Temp.	-20°C - 50°C
Dimensions	7"L x 1.7"W x 1.2"H



3CH CV DMX512 Decoder | Part #: LT-840-6A

Input Signal	DMX512
Input Voltage	5-24V DC
Max Current Load	4A x 3CH / Max 12A
Max Power Output	144W @ 12V DC 288W @ 24V DC
DMX512 Socket	Standard XLR-3, Green Terminal
Dimming Range	0 ~ 100%
Working Temp	-30°F - 65°C
Dimensions	5.3"L x 2.8"W x 2"H



DX Series Touch Panel | Part #: DX63

Input Voltage	100 - 240V AC
Output Signal	RF 2.4G + DMX512
Remote Distance	100 Feet
Control Mode	RGB
Working Temp.	-30°C - 55°C
Dimensions	4"L x 4"W x 2.4"H

