

# Rail Mount Table System

## INSTALLATION INSTRUCTIONS

Part#: FMTB

### PARTS NEEDED:



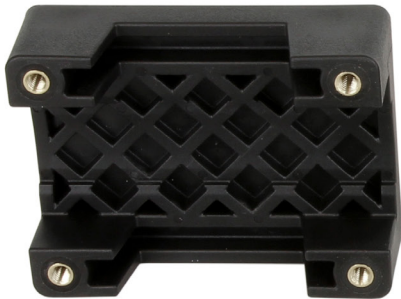
Rail Mount

### INSTALLATION CONSIDERATIONS

- The Rail mount table base is designed to work on formed open rails.
- Use the flat filler piece as fill when using two sided flat fence/rail.
- The mount is intended to be installed and left in place; the table top can be removed as needed.
- Comes assembled.

### Rail Mount Table Base Parts Unassembled

Rail mount bracket back



Rail mount bracket front



Table base post



Scratch Protector

Set screws & washers



Ratchet handle attachment bolt & washer



Ratchet handle



Allen wrench



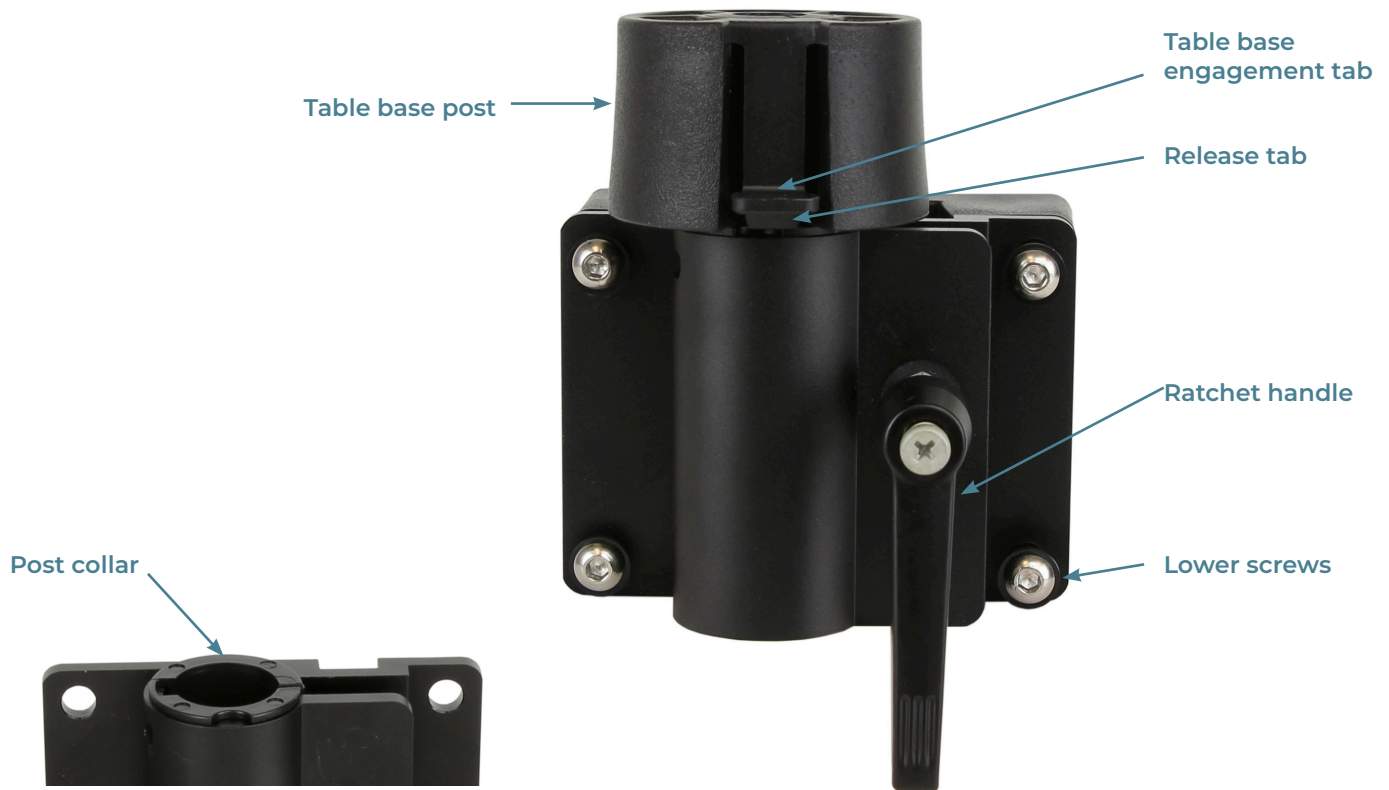
Flat filler with two-sided tape



3030 Corporate Grove Dr.  
Hudsonville, MI 49426  
Phone: 616.396.1355  
[itc-us.com](http://itc-us.com)

For warranty information please visit [www.itc-us.com/warranty-return-policy](http://www.itc-us.com/warranty-return-policy)  
DOC #: 710-00229 · Rev A · 09/06/23

## Rail Mount Table Base Parts Assembled



1. Using the included Allen wrench, remove the two screws and washers on the lower half of the bracket. Loosen the screws on the top of the bracket (can be removed completely as needed) until the bracket can be opened enough to slide bracket onto fence/rail. Be sure scratch protector stays in place.  
For two-sided flat fence/rail remove the paper from the two-sided tape on the flat filler piece, and adhere into the void in the bracket to allow for tighter fit.
2. Once bracket is located in desired location re-insert washers and screws in lower bracket and tighten with Allen wrench - tightening all four screws a little at a time to ensure an even, balanced installation. Tighten until secure.
3. If using an ITC table with pre-installed table base, go to the next step. If using another table top, install ITC table base on table top using self-sourced screws in a length that will not screw through your table top (VERY IMPORTANT do not screw or drill through the top). Place table base in center of the top. Mark screw hole location and pre-drill to start if needed or place base and attach with self-sourced screws.
4. Use the ratchet handle to tighten down the collar on the table mount post. Please use caution as this handle will come completely off the rail mount.
5. Insert table top to rail mount by aligning the post with the table base and push firmly and evenly down until secure.
6. PLEASE READ - Removing the table. Using the ratchet handle loosen the collar so the post can slide out of the rail mount with the table (Note the ratchet will come all the way off the rail mount bracket). Once table is removed from the rail mount the post can be removed or left in for future use. To remove - press the lower release tab in toward the center - this allows the engagement tab to release from the table base, then pull out.

