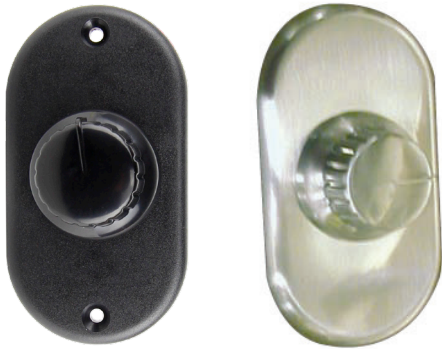


# Digital Dimmer Switch



## Features

- LED compatible
- 12V DC Dimmer can handle up to 80 watts
- Smooth, easy control with on/off position
- Adjusts light output in a gradual transition from 15% -100%
- Recess mount with three bezel finish options
- Order dimmer and decorative cover plate/knob separately
- Simple wiring: two wire input from power and two wire out put to light fixtures

## Specification Guide

21005	Black Dimmer Switch
21006-CH	Chrome Cover Plate and Knob
21006-NI	Nickel Cover Plate and Knob
21008-BL	Black Cover Plate

## Product Details

Housing Material	UV Stable ABS Plastic
Voltage	10-14V
Wattage	80W Max
Current	6.7A @ 12V DC

